

Cincinnati Art Museum

MyCAM

Museum Mix-Up
Family Art Hunt





The Museum is all Mixed-Up!

Explore faces, places, things & ideas on this mysterious mission through the museum.

What treasures will you discover?

Grab some paper, a pencil and your imagination and have fun!



Are You Looking at Me?

Who will you choose to join you on
your mixed-up museum mission?

Check out that awesome armor. He might be a brave person to have on your mission.

ACTIVITY:

This gentleman's garb is glorious.

Your mission is to take turns drawing different details until you have a finished portrait.

How did you do?



Anthony van Dyck (1599-1641), Flanders, *Agostino Spinola, Count of Tassarolo*, circa 1621-1627, oil on canvas, Gift of Mary M. Emery, 1927.393

LOOK AGAIN:

This man is a bit of a mystery. We know he is Italian but do not know his name.

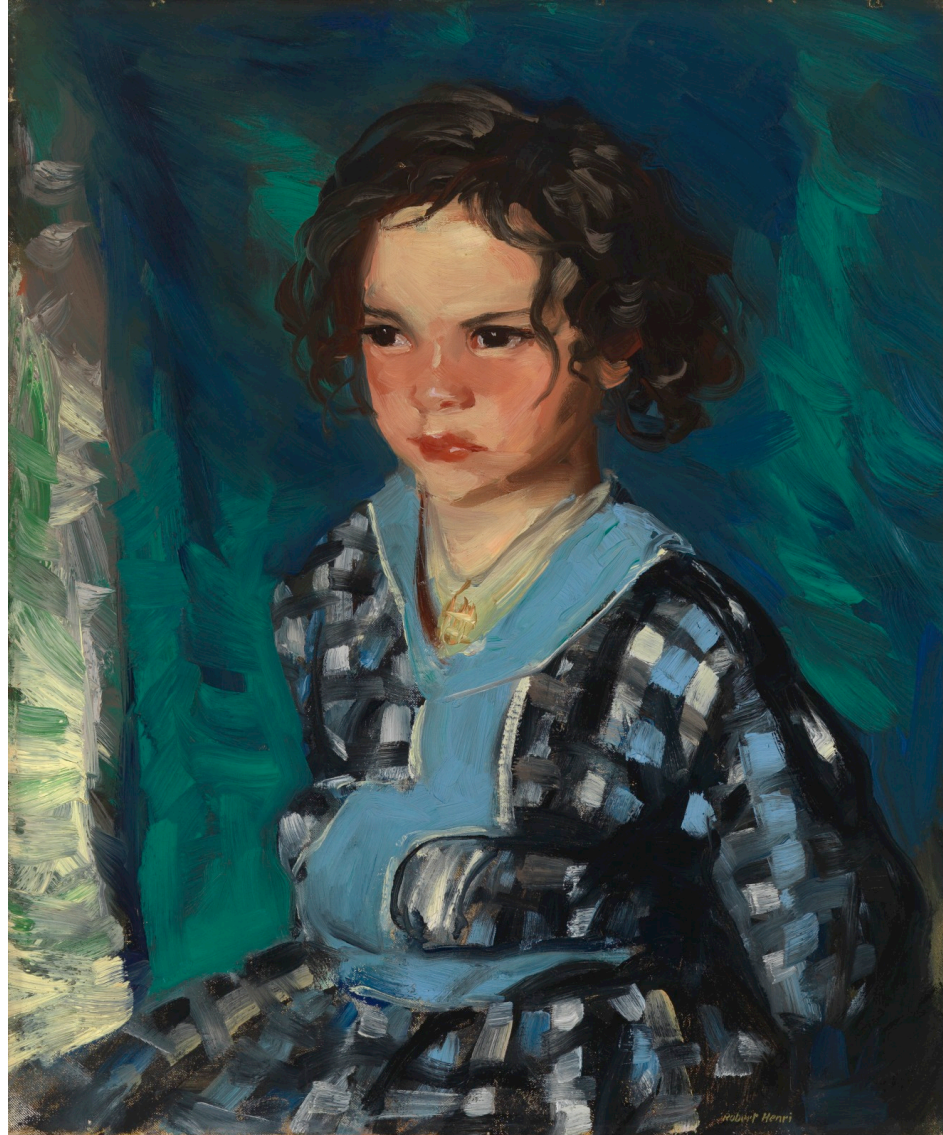
Who do you think this man might have been?

You might need a patient friend to help on this mysterious mission.

ACTIVITY:

Little Patience is very serious. Your mission is to make her laugh.

Write a joke below that you think would make her giggle.



Robert Henri (1865-1929), United States,
Patience Serious, 1915, oil on canvas, Bequest of
Mr. and Mrs. Walter J. Wichgar, 1978.332

LOOK AGAIN:

You can really see the Henri's quick brushstrokes in this portrait.

How would you have painted her?

Maybe you need a horse for this museum mission. Ask this woman to help you find the perfect pony.

ACTIVITY:

Where are all the horses
for this race?

Imagine you are watching
the race with this lady.

Draw what you see from
that point of view.



Edouard Manet, (1832-1883), France, *Women at the Races*, 1866, oil on canvas, Fanny Bryce Lehmer Endowment, 1944.105

LOOK AGAIN:

Manet's paintings were
inspired by the world around
him.

What subject would he capture
if he was painting today?

No clowning around - this mixed-up mission might benefit from a crazy character.

ACTIVITY:

Have you seen a clown
like this before?

Draw a picture of yourself
with this clown, what sort
of fun will you have?



Georges Rouault (1871-1958), France, *Clown*, circa 1918-circa 1922, oil on paper mounted on canvas, Bequest of Mary E. Johnston, 1967.1120

LOOK AGAIN:

Rouault painted a lot of
clown pictures.

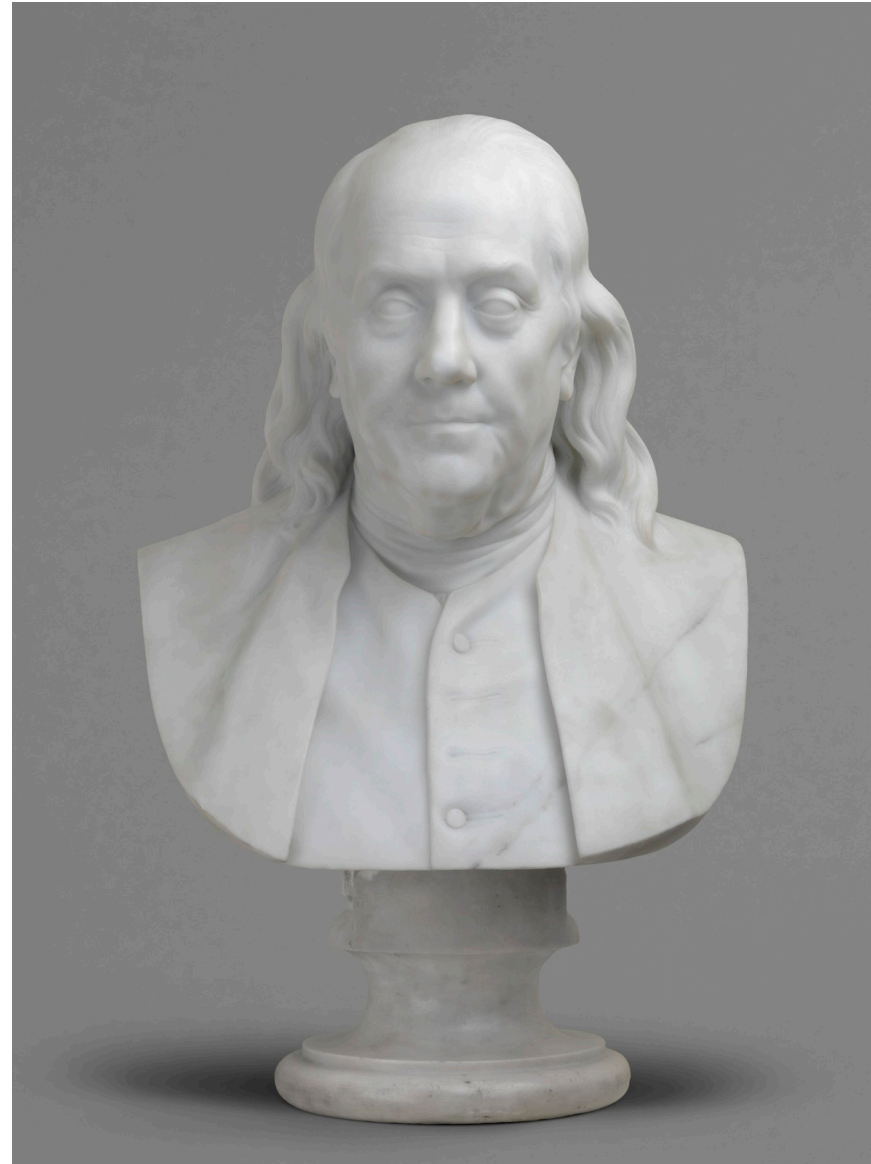
Why do you think he found
them so interesting?

It might be wise to follow this Founding Father on this mystery mission.

ACTIVITY:

Ben Franklin was known for wise words like, "A Penny Saved is a Penny Earned."

What wise words do you have? Share.



Hiram Powers (1805-1873), United States,
Benjamin Franklin, 1848-1851, marble, Bequest of
Dr. Derrick T. Vail Sr., 1935.322

LOOK AGAIN:

Franklin wears his own clothing instead of traditional drapery in this bust.

Does his choice of clothes affect how you view him?



Where Are We Going?

Where will your mixed-up museum mission take you?

How about a nice day fishing in the Little Miami River? Take a break from your mission at Blue Hole.

ACTIVITY:

Imagine you are fishing here, draw a picture of a fish you would want to find in this tranquil spot.



Robert S. Duncanson (1821-1872), United States, *Blue Hole, Flood Waters, Little Miami River*, 1851, oil on canvas, Gift of Norbert Heermann and Arthur Helbig, 1926.18

LOOK AGAIN:

Blue Hole was a popular spot for artists in the 1800s.

Why do think it was so special?

Yosemite is a great place to explore. Will your mission take you to one of our first National Parks?

ACTIVITY:

Yosemite is a National Park.

How many National Parks have you visited?

Or would like to visit? List them.



Albert Bierstadt (1830-1902), United States, *Bridal Veil Falls, Yosemite Valley, California*, oil on paper mounted on canvas, The Edwin and Virginia Irwin Memorial, 2002.45

LOOK AGAIN:

Bierstadt's paintings are detailed recordings of the western landscape.

Take turns finding all the natural elements in this work.

The beach, the feel of sand through your toes. Work on your tan while you plan your next mission.

ACTIVITY:

Your mixed-up museum mission has landed you at the beach.

Draw a picture of your foot lounging on the beach.



Tom Wesselmann (1931-2004), United States, *Seascape #21*, 1967, oil on canvas, Gift of the Artist, 1969.842a-b

LOOK AGAIN:

Wesselmann's painting may not look like a seascape you've seen before.

What makes this work so unique?

Are you ready to go back in time on your museum mission? When in Rome...

ACTIVITY:

Imagine you are standing by Canaletto as he paints.

Draw one thing you think he should have included in this painting.



Giovanni Antonio Canal called Canaletto (1697-1768), Italy, *The Arch of Septimius Severus in Rome*, circa 1743, oil on canvas, Moch Bequest Purchase Fund, 1926.171

LOOK AGAIN:

If this scene were painted today, what do you think the artist would need to include to represent our time period?

Don't forget your wooden shoes. You'll need them if your museum mission takes you to The Netherlands.

ACTIVITY:

You are visiting the windmill with this mother and daughter.

Share the conversation you might have with them.



LOOK AGAIN:

Take turns describing different tiles to see if your friends can guess which one you are sharing.

Wall Plaque: Dutch Landscape, circa 1921, The Rookwood Pottery Company (estab. 1880), William Purcell McDonald (1863-1931) decorator, United States, architectural faience, Gift of Mr. and Mrs. Roger Barkley, 1983.50



What is that Mysterious Object?

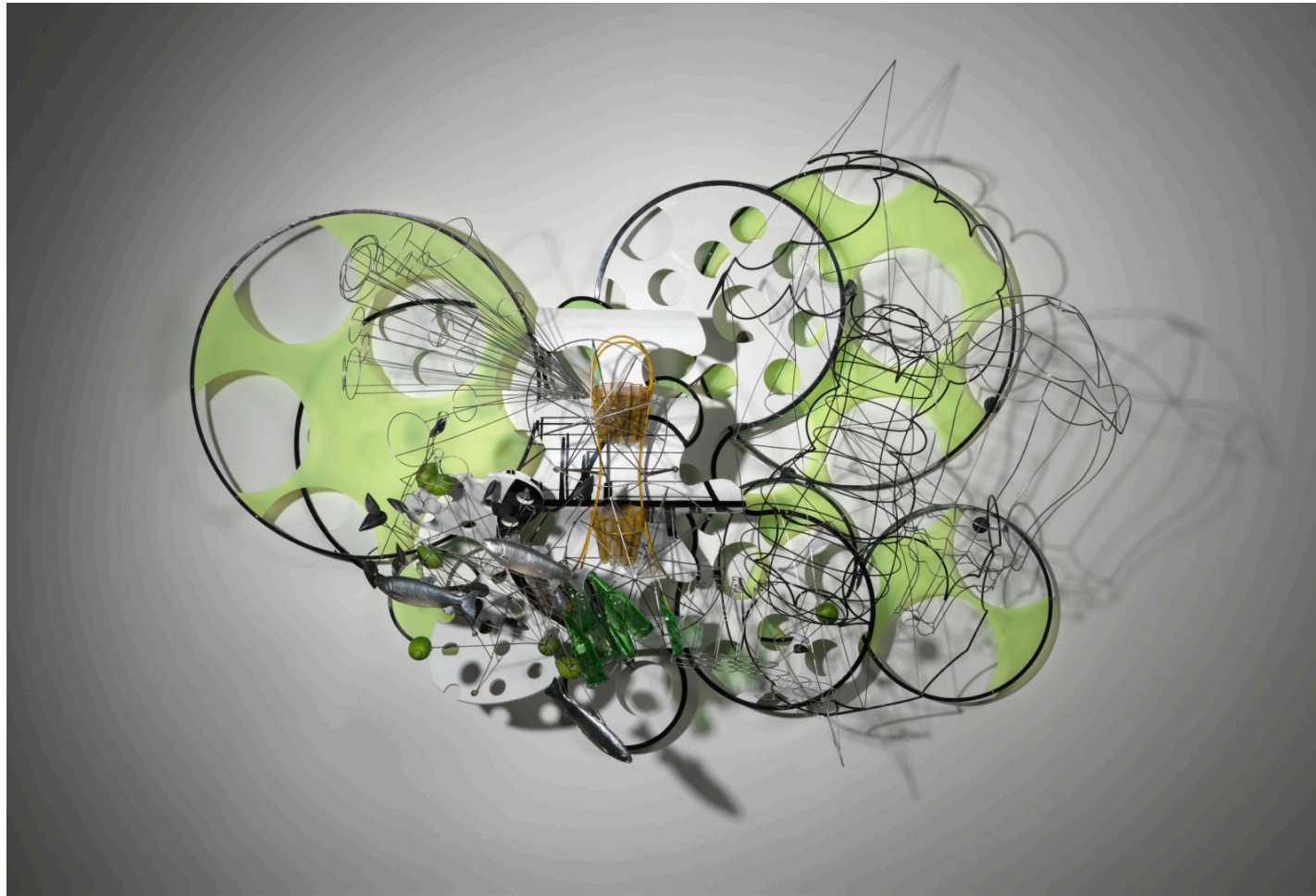
Your next museum mission - choose a
mystery object and answer the question -
What is it?

At the CAM, you will need to climb to the 3rd floor to find this marvelously mixed-up masterpiece

ACTIVITY:

3/4 Time is a sculpture made up of continuous lines.

Draw this sculpture without picking up your pencil – Give it a try!



Judy Pfaff (1946-), *3/4 Time*, United States, 1990, painted wood, steel, plexiglas, found objects, Museum Purchase: Lawrence Archer Wachs Fund, Contemporary Collectors Circle and Alice and Harris Weston Gift Fund, 2006.3

LOOK AGAIN:

If you were going to make a sculpture like this, what objects would you use?

Choosing this perplexing object will shed some light on your museum mission.

ACTIVITY:

Girandole ('jirən, dōl) is a fun word to say, but what is it?

Write or draw what this object might be and how you would use it.



Girandole (with Daniel Boone), circa 1849, Cornelius & Co.(estab. 1839, closed 1851) manufactory, United States, gilded brass, marble and glass, Museum Purchase: Gloria W. Thomson Fund for Decorative Arts, 2003.156

LOOK AGAIN:

One of the figures on this girandole might be Daniel Boone.

What do you think these friends are chatting about?

We need your help determining what the taotie on this container is guarding.

ACTIVITY:

A pair of dragons and taotie decorate this fangyi, or ancient wine container.

Draw your own taotie.



China, Wine Vessel, *Fangyi*, 12th century BCE, cast bronze, Given in honor of Mr. and Mrs. Charles F. Williams by their children, 1948.75

LOOK AGAIN:

A fangyi held offerings for an ancient tomb.

Why do you think people needed objects like this in their tombs?

Is this object big or small? A paperweight or good luck charm? Help us sort out this mystery object.

ACTIVITY:

Netsuke are often decorated with figures from pop culture, animals or flowers.

Design your own netsuke.



Japan, *Netsuke*, late 19th century, ivory, Margaret Pogue Fisk Netsuke Collection, 1996.317

LOOK AGAIN:

This netsuke shows two men. Who do you think these figures are and what are they saying and doing?

Explore our Indian collection to discover the use of this curious container.

ACTIVITY:

The base for this Indian waterpipe is decorated with flowers.

Can you recreate the flower pattern?
Give it a try.



India, *Huqqa (Waterpipe) Base*, 17th century, zinc-based alloy, inlaid with silver and brass (bidriware), John J. Emery Fund, 1985.164

LOOK AGAIN:

The flowers and the rushing water on this huqqa is really intricate.

Why do you think the artist decorated it in this way?



Need a Snack?

This mixed-up museum mission is going to be tough - select a snack to keep you going.

Wow! By this point in your mixed-up museum mission, you must be pretty thirsty.

ACTIVITY:

This water urn is decorated with ships, dolphins, and shells.

How would you design this urn? Draw yours.



LOOK AGAIN:

This fancy silver urn was used to serve coffee or tea.

How would you use this urn, what type of drink would it hold?

James Shruder (1737-1753), England, *Hot Water Urn and Stand*, 1752, sterling silver, The Folgers Coffee Silver Collection, Gift of the Procter & Gamble Company, 1999.662 a-b

A nice slice of juicy watermelon might just be the perfect summer snack.

ACTIVITY:

Ripe, red watermelon, ready to be eaten.

Write a poem about a time you ate a piece of watermelon.



Frank Duveneck (1848-1919), United States, *Still Life with Watermelon*, circa 1878, oil on canvas, The Dexter Fund, 1922.109

LOOK AGAIN:

Duveneck painted very few still-lives, so this one is rare.

Why do you think he chose these objects for this vivid painting?

Looking at this work of art might make you want to go on a picnic.

ACTIVITY:

Your abstract snack is waiting for you on the table. Grab some treats and head outside. Draw a picture of your picnic.



Georges Braque (1882-1963), France, *Compote, Bread and Cheese*, 1941, oil and sand on canvas, Bequest of Mary E. Johnston, 1967.1317

LOOK AGAIN:

Braque was a Cubist painter. He believed artists should show objects from many sides at once. How has he done that here?

You will have to put some work into harvesting this tasty treat. Did you bring your shovel with you?

ACTIVITY:

Time to help with the cabbage harvest!

Create a list of all the things you can make with this multi-layered veggie.



Camille Pissarro (1830-1903), France, *Cabbage Patch Near the Village*, 1875, oil on canvas, Gift of Albert P. Strietmann, 1952.240

LOOK AGAIN:

Pissarro included people in his landscapes.

Do you like the addition of people? Why or why not?

You might have to jump and catch this swinging snack (but please don't).

ACTIVITY:

Apples and exercise are good for you.

Make a Calder-inspired mobile at home and see if you can make it move.



Alexander Calder (1898-1976), United States, *20 Leaves and an Apple*, 1946, sheet metal and piano wire, Gift of Thomas Emery's Sons, Inc., 1965.516

LOOK AGAIN:

Calder's mobiles were often called moving Miros. He did this painting (<https://cincinnatiartmuseum.org/art/explore-the-collection?id=23171413>).

Compare these two works, what do you think?



What is the Secret Message?

Your final mixed-up mission is to decode the secret meaning of one of these objects - choose wisely.

This portrait was created using only symbols. Travel to India to decipher all these details.

ACTIVITY:

Imagine drawing your portrait using only symbols.

What things would you include? Try it.



Unidentified Maker, India, *Buddhist Relief*,
2nd Century CE, limestone, Anonymous Gift,
1952.187

LOOK AGAIN:

Each of this relief's elements symbolize an aspect of the Buddha's life.

What do you think each symbol means?

Is this just a pretty bowl or does it hide a hidden message?

ACTIVITY:

Flowers can symbolize different emotions and traits.

What is your favorite flower, what do you think it means. Draw it.



China, *Bowl*, Qingbai-type ware, 13th Century, porcelain, Qingbai ware, Gift of Dr. Robert A. Kemper, 1991.164

LOOK AGAIN:

This bowl's plum blossom means perseverance since it blooms in the winter.

What other things could symbolize perseverance?

Dance your way to CAM's African galleries to find the meaning of this monumental masterpiece.

ACTIVITY:

This mask represents Mother Earth, worn during a ceremony to ensure a good harvest.

Draw a picture of yourself at this ceremony.



Western Guinea, *Fertility Dance Headdress* (Nimba/D'mba/Yamban), Early 20th Century, wood, originally with raffia attachment, Gift of Charles and Harriet Edwards and Museum Purchase with funds from the Lawrence Archer Wachs Fund, 1998.43

LOOK AGAIN:

This Nimba mask towers eight feet above the ground when worn on a dancer's shoulders.

How would you move if you were the dancer?

A girl, a cupid and a sunflower - what is the mystery behind this masterpiece?

ACTIVITY:

Sunflowers follow the sun across the sky - just like Clytie follows Apollo.

Draw a picture of your best sunflower.



Annibale Carracci (1560-1609), Italy, *Clytie with Cupid*, 1630s-1640s, oil on panel, Gift of the Duke and Duchess of Talleyrand-Perigord, 1952.199

LOOK AGAIN:

In this painting, Cupid holds a flaming torch, a symbol for the god Apollo.

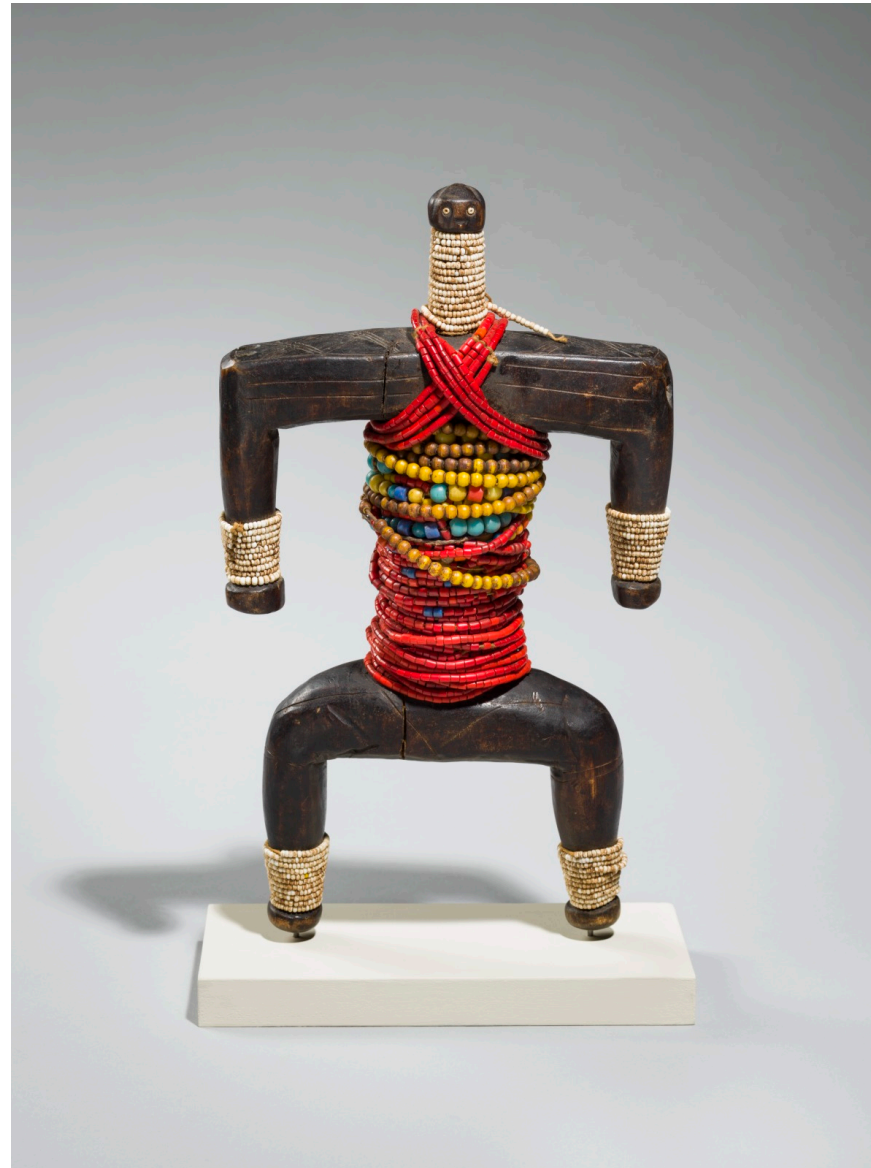
What other symbols represent the Greek gods?

Discover the mystery behind this special doll in the CAM's African gallery.

ACTIVITY:

This Namjii doll is decorated with beads and fibers.

How would you decorate your Namjii doll? Draw it.



Unattributed Namji Artist, Cameroon, *Doll*, mid to late 20th century, wood, multicolored beads, Museum Purchase: Gift of the Duke and Duchess of Talleyrand-Perigord, by exchange, 1987.76

LOOK AGAIN:

Namjii dolls are good luck figures for women who want to have a baby.

What does she need to do to take care of her Namjii?

MyCAM is based on JourneyMaker, the family interactive experience designed and developed by the Art Institute of Chicago.

The museum worked with Paperplane Creative and Clifton Labs to bring JourneyMaker to the Cincinnati.

MyCAM is generously supported by The Ward E. Bullock Endowment for Interactive Education.